

# ICS

# 2000



AMD EPYC™ 8004 "Siena" Processor  
Edge AI Server

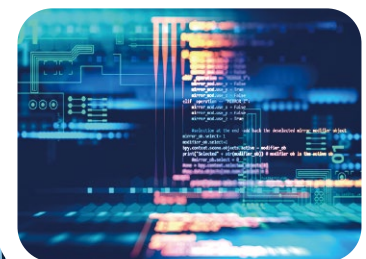
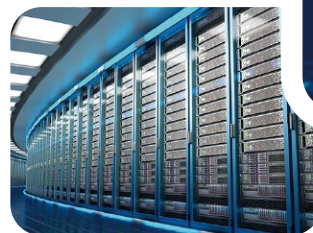


## ^ Edge AI Computing

- Server-level Platform : AMD EPYC™ 4th Gen 8004 "Siena" Processor, up to 64-core
- 6 DDR5 4800MHz Memory supports up to 768GB
- 2 PCIe 5.0 x16 slots with a total 1800W power budget, supporting up to dual 900W NVIDIA® or AMD 2-slot graphics cards, and 4 PCIe 5.0 x8 slots for expansion cards
- Multiple storage devices : 4 M.2 Key M and 4 Front-access U.2
- 2 LAN, 2 USB, 5 COM, 16-bit DIO, 5G/WiFi 6/4G/LTE/GPRS/UMTS, TPM 2.0 and OOB remote management
- DC 16V to 50V or AC 220V power input options with software ignition control



## ^ Storage Management



## ^ Data Analytics



# Vecow

# Specifications

## System

Processor	AMD EPYC™ 4th Gen 8004 "Siena" Server Processor
BIOS	AMI
SIO	IT8786E
Memory	6 DDR5 RDIMM 4800MHz, up to 768GB
OS	Windows Server, Linux

## I/O Interface

Serial	- 4 COM RS-232/422/485 - 1 COM RS-232
USB	2 USB 3.2 Gen1
Isolated DIO	16 Isolated DIO : 8 DI, 8 DO
Display	DisplayPort : Up to 1920x 1200 @60Hz
LED	Power, HDD, BMC
SIM Card	3 External Nano SIM Card Socket

## Expansion

PCIe	- 2 PCIe x16 slot with PCIe 5.0 x16 signal - 4 PCIe x16 slot with PCIe 5.0 x8 signal
M.2	- 2 M.2 Key B Socket (3042/3052, PCIe1/USB3.0) with SIM - 1 M.2 Key E Socket (2230, PCIe1)
mini PCIe	1 Full size Mini-PCIe socket (PCIe1/USB2) with SIM

## Storage

U.2	4 U.2 front access tray (PCIe x4) *M.2 supported by optional accessory
M.2	4 M.2 Key M (2280, PCIe 4.0 x4)

## Ethernet

LAN 1	Intel® I350 GigE LAN
LAN 2	Intel® I350 GigE LAN
LAN 3	GigE MLAN for management (BMC)

## Power

Power Input	<b>ICS-2000</b> : 16V to 50V, DC-in <b>ICS-2000A</b> : 90V to 240V, AC-in (2200W @220V, > 2200W by request)
Power Interface	<b>ICS-2000</b> : 6-pin Terminal Block : V+, V+, V+, V-, V-, V- <b>ICS-2000A</b> : 3-pin C14-type AC Plug
Ignition Control	16-mode Software Ignition Control
Remote Switch	3-pin Terminal Block

## Others

TPM	Infineon SLB9670 supports TPM 2.0, SPI Interface
Watchdog Timer	Reset : 1 to 255 sec./min. per step
Smart Mgmt.	Wake on LAN supported
HW Monitor	Monitoring temperature, voltages. Auto throttling control when CPU overheats.

## Mechanical

Dimensions	345mm x 405mm x 200mm (13.58" x 15.94" x 7.87")
Weight	13.1Kg (28.88lb)
Mounting	Wallmount by mounting bracket

## Environment

Operating Temperature	<b>ICS-2000</b> : -25°C to 45°C <b>ICS-2000A</b> : -5°C to 45°C
Storage Temperature	<b>ICS-2000</b> : -40°C to 85°C (-40°F to 185°F) <b>ICS-2000A</b> : -20°C to 85°C (-4°F to 185°F)
Humidity	5% to 95% Humidity, non-condensing
Relative Humidity	95% @45°C
Shock	MIL-STD-810G method 514.6
Vibration	MIL-STD-810G method 516.6
EMC	CE, FCC, EN50155, EN50121-3-2

\* All product information may subject to change without prior notice.

\* The rights of all brand names, product names and trademarks belong to their respective owners.  
Copyright © 2026 Vecow Co., Ltd. All rights reserved.

**Vecow** info@vecow.com



# Order Information

Model	PCIex16	PCIex8	U.2 Tray	Power Input
ICS-2000	2	4	2	DC
ICS-2000A	2	4	2	AC

## CPU List

Series	Model	Cores	GHz	TDP
EPYC Siena	8224P	24	2.55	160

\* For others CPU model, please check with Vecow Team.

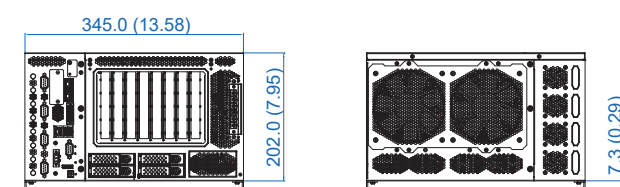
## Accessories

DDR5 96G	Certified DDR5 96GB 4800MHz RAM
DDR5 64G	Certified DDR5 64GB 4800MHz RAM
DDR5 32G	Certified DDR5 32GB 4800MHz RAM
DDR5 16G	Certified DDR5 16GB 4800MHz RAM
PWS-1000W-24V	1000W, 24V, 90V AC to 264V AC Power Supply
PWS-1500W-24V	1500W, 24V, 90V AC to 264V AC Power Supply
PWS-3000W-24V	3000W, 24V, 90V AC to 264V AC Power Supply
TMK2-20P-100	Terminal Block 20-pin to Terminal Block 20-pin Cable, 100cm
TMK2-20P-500	Terminal Block 20-pin to Terminal Block 20-pin Cable, 500cm
TMB-TMBK-20P	Terminal Board with One 20-pin Terminal Block Connector and DIN-Rail Mounting
M.2 Storage Module	M.2 Key M Storage Module
U.2 Storage Module	U.2 Storage Module
M.2 to U.2 Module	M.2 to U.2 Module
5G Module	5G Module with Antenna
4G Module	4G/GPS Module with Antenna
WiFi & Bluetooth	WiFi & Bluetooth Module with Antenna

# Dimensions & Drawing

Unit : mm (inch)

## ICS-2000



## ICS-2000A

