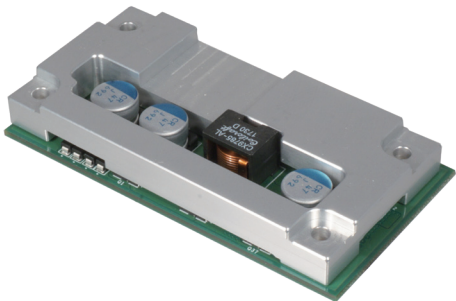


CFM-PoE01

CFM Module with PoE Function, Individual Port 25.5W



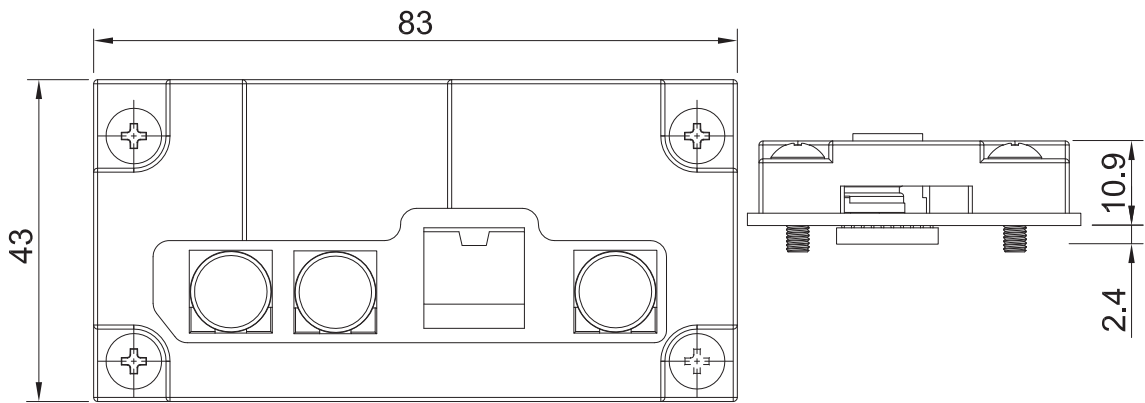
- CFM (Control Function Module) Technology
- Enable Power Over Ethernet Plus Function for CMI Module
- IEEE 802.3at Compliant
- Individual Port Support Up to 25.5W



Specifications

Interface	▪ CFM (Control Function Module) Interface
Function	▪ 4x Power over Ethernet Plus Ports (PoE+)
Power over Ethernet Standard	▪ IEEE 802.3at Compliant
Power Output	▪ Individual port 25.5W
Power Boost	▪ 50 ~ 57V
Dimension(W x D x H)	▪ 83 x 43 x 10.9 mm (With Heatsink)

Dimensions



Unit: mm

Ordering Information

Available Models

Model No.	Description
CFM-PoE01	PoE Control Function Module, Individual port 25.5W

Package Checklist

▪ Control Function Module x1	▪ Heatsink x1
▪ Thermal Pad Pack x1	▪ Screw Pack x1

Compatible List

Product Series	Product Model
DX Series	DX-1200 DX-1100
GM Series	GM-1000 GM-1100
GP Series	GP-3000 GP-3100